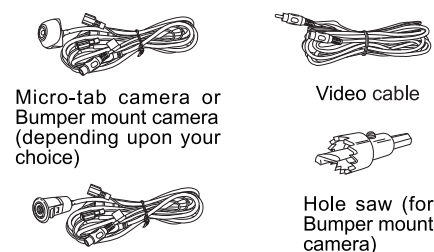


Universal camera

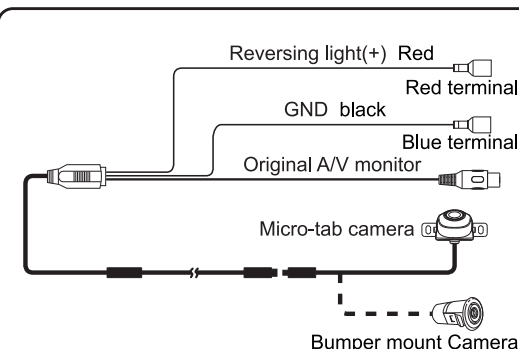


Installation manual

Packing list

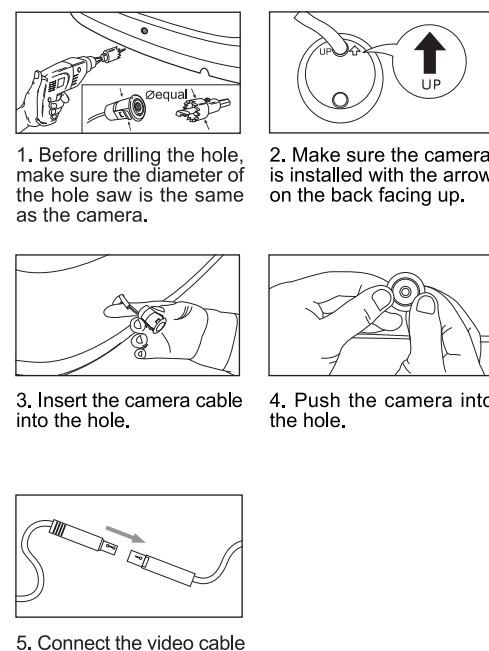


Camera installation and wiring



1

Bumper mount camera installation



2

Function

When installation of the camera is complete, switch ignition on and engage reverse gear.

- 1) The original A/V monitor will enter into the rear view mode automatically when it is off. Disengage reverse gear and it will return to the main menu interface.
- 2) The original A/V monitor will enter into the rear view mode automatically when it is on. Disengage reverse gear and it will return to the original state.
- 3) The system will not activate if the ignition is switched off.
- 4) The parking assist lines are only for reference, and can not be used to measure actual distances.
- 5) Estimate the obstacle distance according to the rear bumper.

Bumper mount camera rear view.



Parking assist lines

Micro-tab camera rear view.

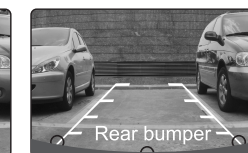
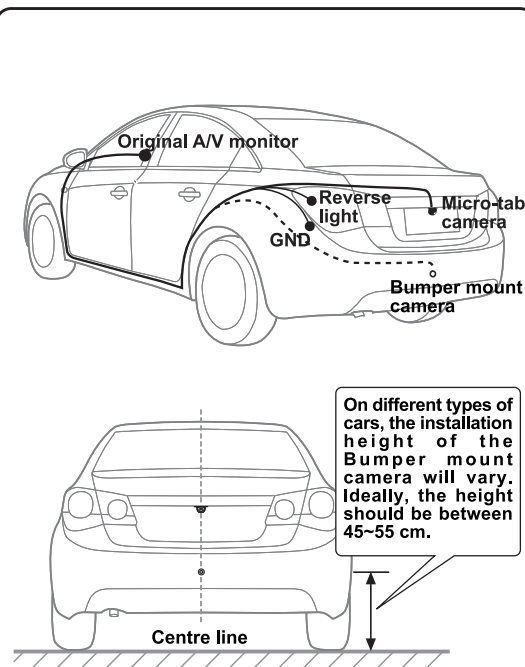


Image of rear bumper

Parking assist lines

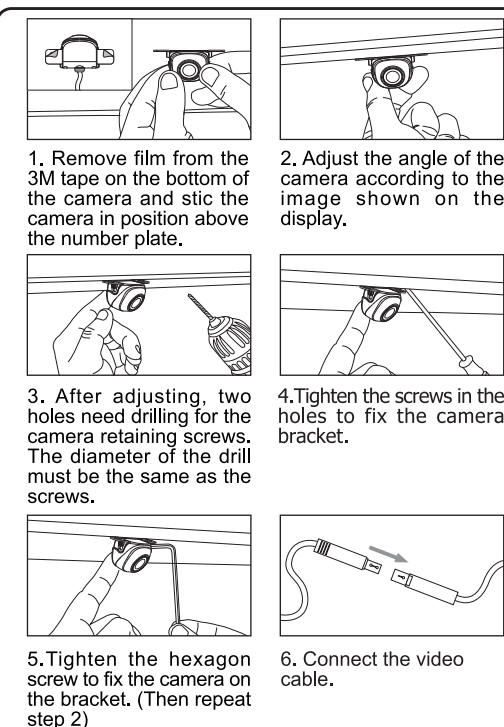
3

Installation and wiring diagram



4

Micro-tab camera installation



5

Attention

1. The camera has a wide-angle lens, therefore the actual distance of an obstacle may appear closer on the monitor than it actually is.
2. The main camera body is sealed, to help prevent water ingress. Do not try to open the camera, doing so will compromise performance and reliability of the camera.
3. Do not suspend the body of the camera from the cable or pull the cable, it may reduce performance, break the cable, or develop a fault.
4. If the vehicle you are installing the camera into has a phone fitted the distance between the camera and aerial should be over 60cm, if not the phone may interfere with the displayed image from the camera.
5. Water and dirt will affect the image from the camera. If the camera lens is wet, dirty or covered in any way please wipe it with a damp cloth, but do not rub it too hard, or it may damage the camera.
6. This product is for reversing assistance only. We will not be responsible for any accident. Normal driving procedures should be practiced at all times.

6

Warranty card

Dear user:

Thank you for choosing this product. Please fill the form below and retain it.

User's information:

| |
|------------------------|
| User: |
| Tel: |
| Vehicle license No.: |
| Product model No.: |
| Serial No.: |
| Date of installation: |
| Name of the retailer: |
| Signed by distributor: |

7